

SURVEYOR'S RECORD

Section 32

Township 106

Range 40

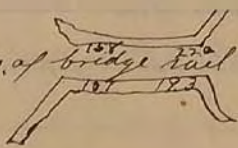


Nov. 6 1901

B. Cor. 2' West of Fence Post

C. Cor. of bridge measure taken from cor. of bridge rail

D. Cor. cor maunds & Pits



E.

F.

G. Stakes & Stone 6x8x18

Cor. cor at S.S.

Established X

Stakes marked by previous survey C.B.

J.H. Hoalstuncroft

"X" On Top of Bridge: R.P. SE. Cor. of bridge rail 19.3'; R.P. SW. Cor. of Bridge rail 10.2'; R.P. NW. Cor. of Bridge rail 15.1'; NE. Cor. of Bridge rail 22.9';

"F" Stone: R.P. Tack in Blazed fence Cor. East on line 32.9';

R.P. Tack in Blazed Brace post NW. 34.9';

G. Located eye hub with tack & removed; Placed steel shaft 6" below gravel grade in place of hub: R.P., PP, SE. 56.23'; R.P., NW, T&T, NW 57.48'; R.P., NW, Sign Post North 42.65' - April 10, 1924

A. Located eye hub with tack; Placed 1" steel shaft above - 4" below gravel grade: R.P., NW, Con Post, South 50.39'; R.P., white steel fence post (Red top) SW 67.46'; R.P., NW, PP, SW 106.68' - April 10, 1924

32

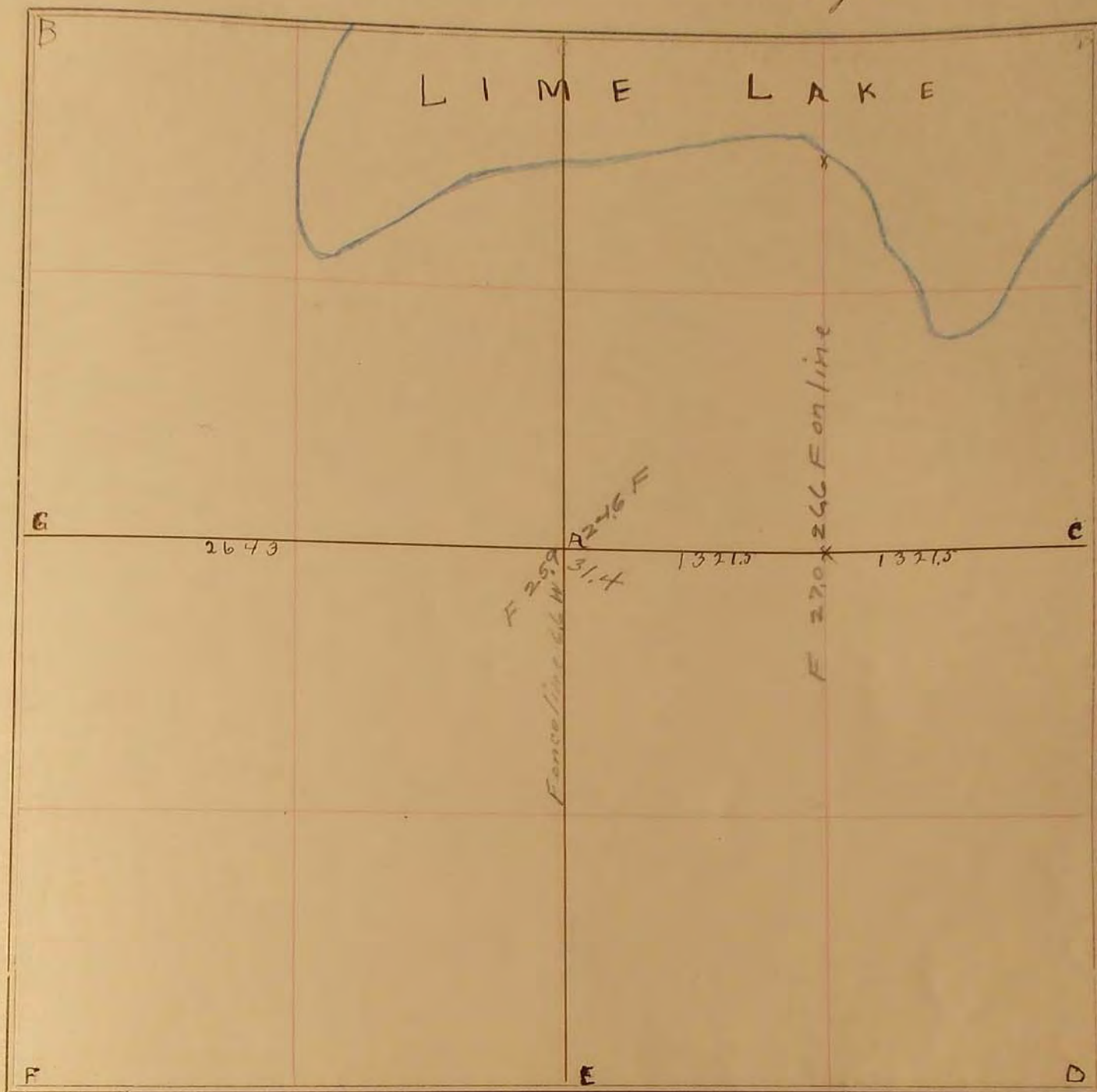
33

SURVEY No. _____

Section 32

Town 106

Range 40



FIELD NOTES.

NOV. 6, 1901.

B Cor. 2' west of fence post

C " of bridge *Manufactured from bars*

D Gov. Cor. mounds + pits

E

F

G Stake + stone 6 x 8 x 18

Gov. Cor at DG

Established x

Stake marked by previous survey C.B.

J.W. Woolstenhulft

